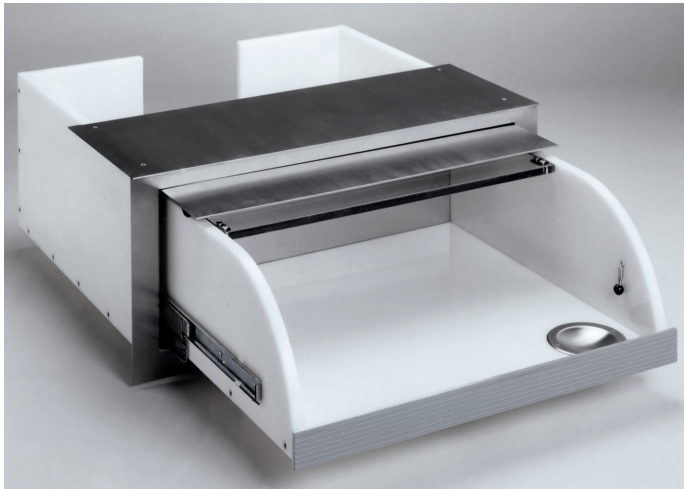


Drawers



Transaction Drawer 2725-SS

Transaction Drawer 2725-SS is designed for exterior walk-up and drive-up service. This drawer is weather resistant as well as bullet resistant. Stainless steel front panel pivots upward and inward as drawer moves outward. Movement is provided by smooth running extension slides. Drawer locks with drop bolt. Coin scoop and bill clip are included. Clear Lexan lid allows clear view of contents.

Construction:

Drawer and housing: bullet resistant plastic

Face, hood, and coin scoop:

Stainless steel

Drawer extension:

19"

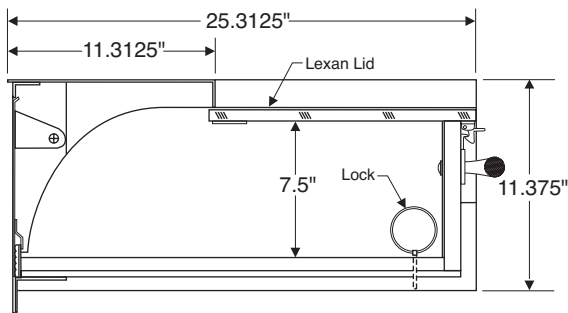
Wall opening size:

27.375" wide x 11.5" high

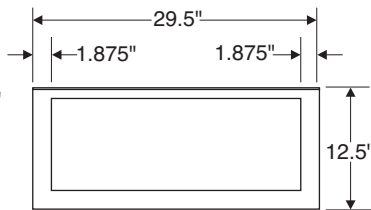
Drawer inside dimension:

23.25" wide x 22.5" deep x 7.5" high

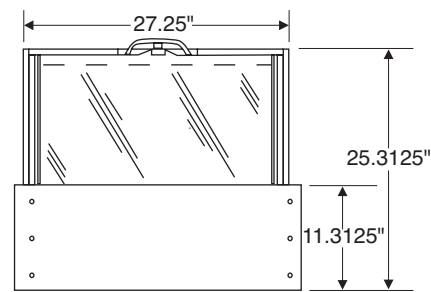
Level I bullet resistant



Section



Front View



Plan View



Counter Top with Drawer Patented

Stainless steel counter top with built-in drawer (patented) is ideal for stadiums, motels, banks or gas stations. Ample space is provided on top for writing surface. Drawer moves quietly on solid bearing slides and blends smoothly into front of counter top when closed. Drawer locks via turn latch in handle. Unit is weatherstripped to hold energy loss to a minimum.

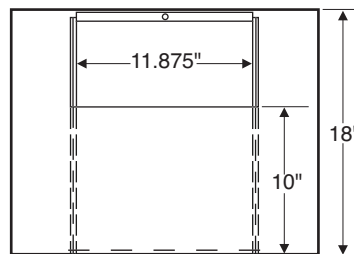
Construction:

Stainless steel

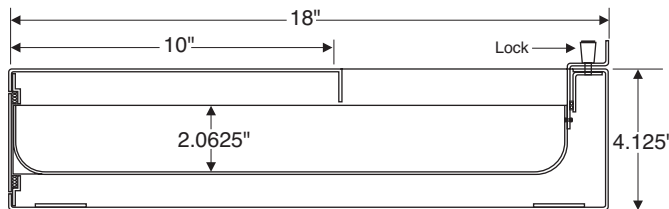
Inside drawer dimensions:

11.875" wide x 16" deep x 2.0625" high.

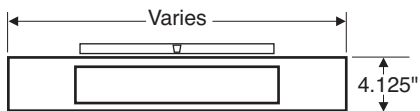
Level I bullet resistant



Plan View



Section



Front View