

Deal Trays

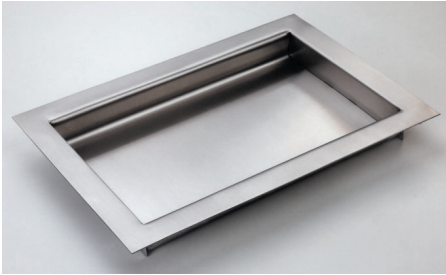
Deal Trays One Way Non-Ricochet

One Way Non-Ricochet Deal Tray has an exclusive "S" shaped section on the operator's side. This allows a bullet to be directed back towards the window above the deal tray or back towards the gunman, depending upon the angle of impact.

Construction:

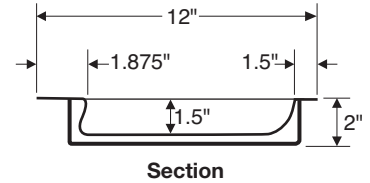
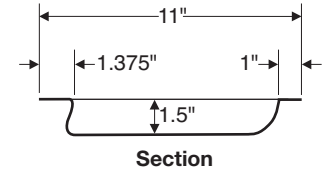
Stainless steel

Level I or III bullet resistant



Level I Bullet Resistant			Cut Out Size
Model	W	D	Width x Depth
1211-OW	12"	11"	10.25" x 9.375"
1611-OW	16"	11"	14.5" x 9.375"

Level III Bullet Resistant			Cut Out Size
Model	W	D	Width x Depth
1212-OW	12"	12"	10.25" x 10.25"
1612-OW	16"	12"	14.25" x 10.25"



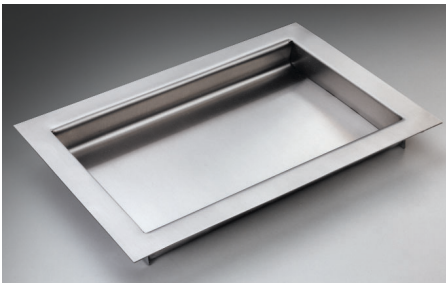
Deal Trays Non-Ricochet

Non-Ricochet deal tray has an exclusive "S" shape section which allows a bullet to be contained within the tray or be directed back toward the window above, depending upon the angle of impact.

Construction:

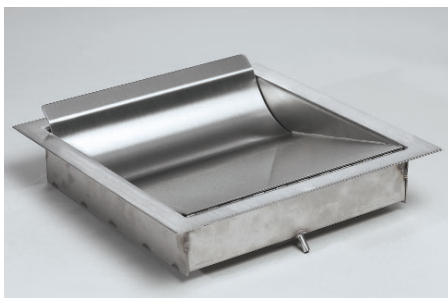
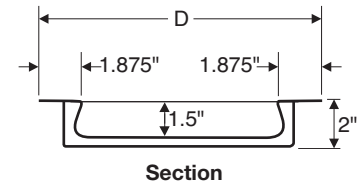
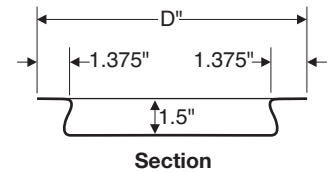
Stainless steel

Level I and III bullet resistant



Level I Bullet Resistant			Cut Out Size
Model	W	D	Width x Depth
1211-NR	12"	11"	10.25" x 9.25"
1611-NR	16"	11"	14.25" x 9.25"

Level III Bullet Resistant			Cut Out Size
Model	W	D	Width x Depth
1212-NR3	12"	12"	10.5" x 10.375"
1612-NR3	16"	12"	14.5" x 10.375"



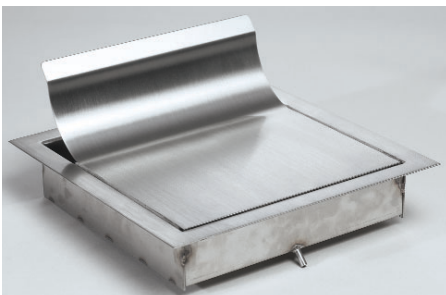
Self Closing Deal Tray SC (patent pending)

Deal tray hinges down for open position, up for closed position. Weatherstrip available for exterior use.

Construction:

Stainless steel

Level I or III bullet resistant



Level I Bullet Resistant			Cut Out Size
Model	W	D	Width x Depth
1212-SC	12"	12"	10.5" x 10.5"
1612-SC	16"	12"	14.5" x 10.5"

Level III Bullet Resistant			Cut Out Size
Model	W	D	Width x Depth
1213-SC	12"	13"	10.5" x 11.25"
1613-SC	16"	13"	14.5" x 11.25"

