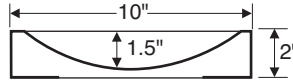


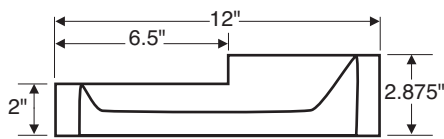
Deal Tray 1210-CT and 1610-CT

Deal Trays mount below bullet resistant window to allow transfer of currency and small items. Stainless steel counter top model deal tray mounts on top of counter. No cut out is required.

Construction:
Stainless steel
Level I bullet resistant



Section



Section

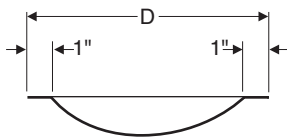
Step Deal Tray HCT

Stainless steel counter top deal tray has "step" design with lower section on customer side, higher section for operator side. Glazing to sit in lower section. This unit with double wall construction is available in Level I or Level III ballistic level.

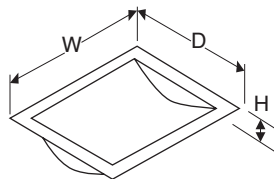
Construction:
Stainless steel

Level I Bullet Resistant		
Model	W	D
1212-HCT	12"	12"
1812-HCT	18"	12"

Level III Bullet Resistant		
Model	W	D
1212-HCT-3	12"	12"
1812-HCT-3	18"	12"



Section

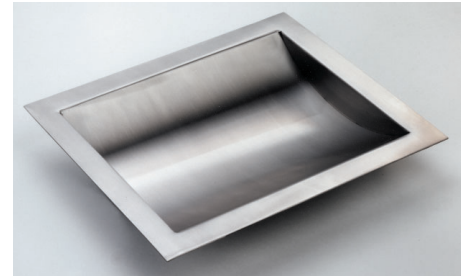


Deal Tray 1210-S, 1610-S and 1411-S

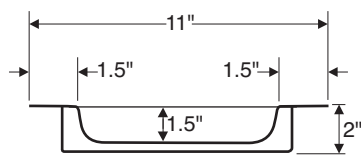
Stainless steel drop-in model deal tray is recessed into counter top opening for flush appearance.

Construction:
Stainless steel

Level I bullet resistant



Model	W	D	H	Cut Out Size
				Width x Depth
1210-S	12"	10"	1.5"	10.5" x 8.5"
1610-S	16"	10"	1.5"	14.5" x 8.5"
1411-S	14"	11"	2.5"	12.5" x 9.5"

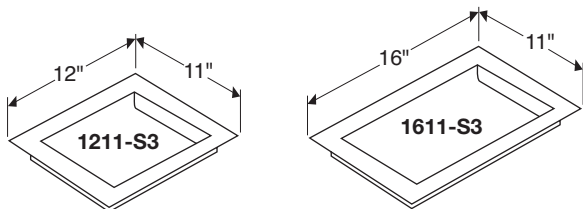


Section

Deal Trays Level III Protection

Stainless steel Level III deal tray recesses into opening in counter top.

Construction:
Stainless steel



Model	Cut Out Size
	Width x Depth
1211-S3	10.5" x 9.5"
1611-S3	14.5" x 9.5"

