

Recessed Deal Tray with Sliding Lid RSL 1414

Stainless steel recessed deal tray unit mounts flush in counter top with window (by others) centered above. Sliding lid has full width flange across rear which acts as handle. The lid slides on solid bearings, forward or backward to uncover desired section of deal tray below. Lid offers extra protection and helps minimize heat or cooling loss.

Construction:

Stainless steel

Tray accommodation:

Items up to 10.5" wide x 4" deep x 2" high

Overall Size:

14" wide x 14" deep x 2.5 high

Counter top opening:

12.25" wide x 12.25" deep



Sliding Lid Model Deal Tray 1214-SL

Sliding Lid Deal Tray is designed for maximum protection against all hand guns, including the .44 Magnum. Stainless steel construction, lid slides forward to uncover open deal tray below. Unit mounts on counter top, with customer's window positioned across the top center ledge above the lid.

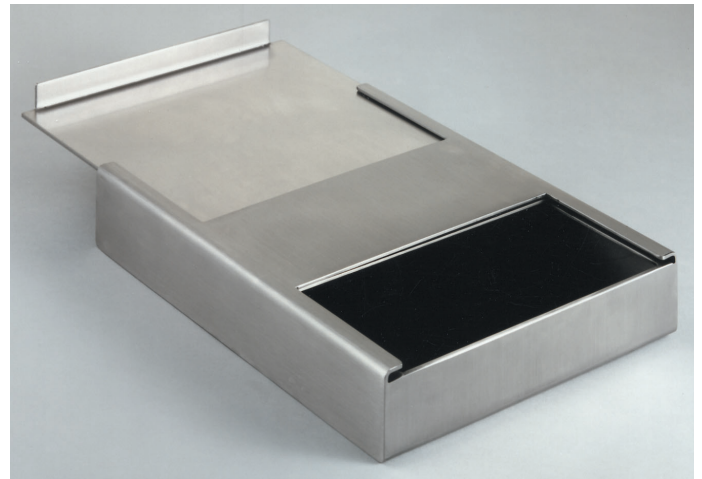
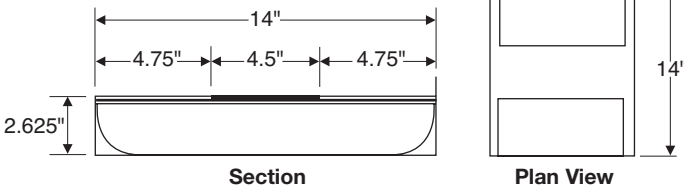
Construction:

Stainless steel

Tray inside dimension:

10.375" wide x 2.125" high

Level III bullet resistant



Slide Top ST 1620

Slide Top serves both as deal tray and pass thru. Recessed deal tray in center of sliding lid moves forward or backward beneath the center ledge for transaction of currency and small items. Bulkier items can pass through the larger cavity below. Slide top is constructed of stainless steel. It can be mounted in wall opening or on counter, with window above center ledge.

Construction:

Stainless steel

Level I bullet resistant

