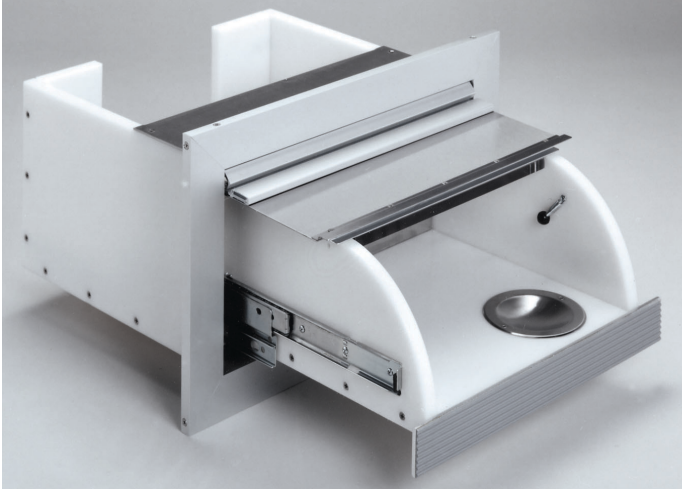


Drawers

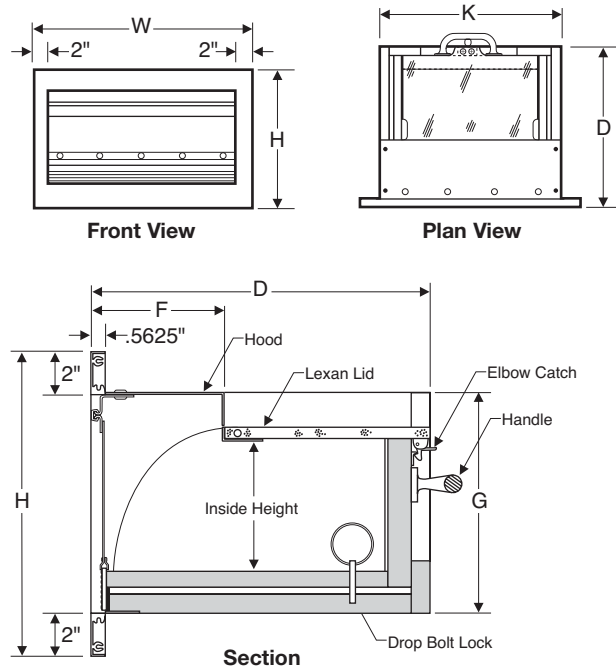


A Series Transaction Drawers

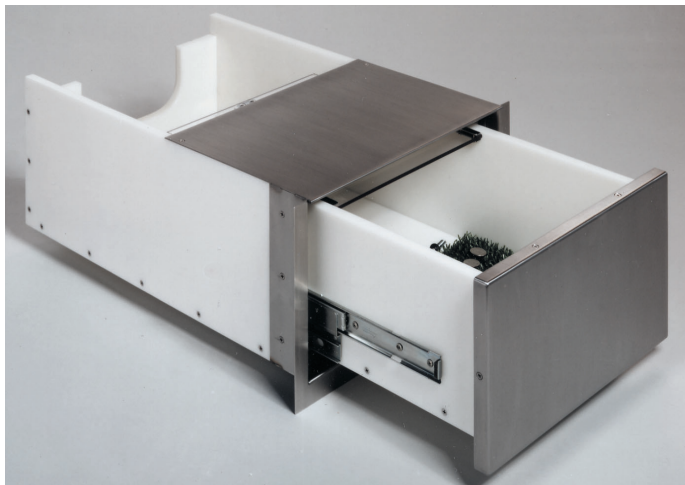
A Series Transaction Drawers are weather resistant as well as bullet resistant. The front stainless steel panel pivots upward as drawer moves outward. Drawer movement is provided by smooth extension slides. It locks with drop bolt. Lexan lid stays closed as drawer is extended.

Construction:

Drawer unit: aluminum frame, stainless steel hood, bullet resistant plastic



Model	Overall Size						Inside Drawer Dimensions			Wall Opening
	W	H	D	F	G	K	Width	Height	Depth	Width x Height
1715A	20.875"	13.125"	15"	6.25"	9.4375"	17"	12.75"	5.25"	12.375"	17.5" x 9.625"
1818A	21.875"	15.625"	18"	7.625"	11.6875"	18"	13.75"	7.5"	15.375"	18.5" x 12"
1824A	21.875"	18.75"	24"	10.75"	14.8125"	18"	13.75"	10.625"	21.375"	18.5" x 15.125"
2725A	30.875"	14.75"	24.75"	11.25"	11.3125"	27"	22.75"	7.375"	22.125"	27.5" x 11.625"
1224A	15.875"	15.875"	24.125"	8.25"	12"	12"	8"	8"	21"	12.5" x 12.5"



1724-WW and 1728-WW Transaction Drawers

WW Series Transaction Drawers are designed with exterior walk-up service in mind. It has an extra deep stainless steel hood which enables it to fit thicker walls. The Lexan lid prevents direct entry from outside air while allowing clear view of drawer interior. Drawer movement is controlled by a large aluminum handle on rear. Front of unit is stainless steel. Easy operation is allowed by smooth running ball bearing extension slides.

Drawer is furnished with bill clip and brush type coin pad and locks with drop bolt through bottom of drawer into housing.

Construction:

Stainless steel hood and front panel

Model	Dimensions	
	D	F
1724 WW	24.25"	11"
1728 WW	28.25"	15"

